

BERENFIELD CONTAINERS

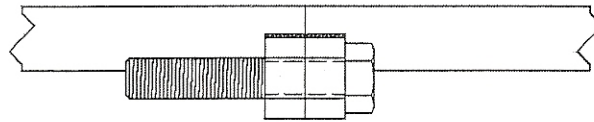
DOT 178 NOTICE

CLOSURE REQUIREMENTS FOR STEEL DRUMS

IN REGULATION 49 CFR 178.2 (C), THE DEPARTMENT OF TRANSPORTATION REQUIRES DRUM MANUFACTURERS TO INFORM THEIR CUSTOMERS OF HOW TO CLOSE DRUM FITTINGS AND CLOSURE RINGS IN ORDER TO ENSURE THE DRUM WILL PERFORM TO THE MARKING LEVEL INDICATED THEREON. PLEASE SEE THAT THIS INFORMATION IS AVAILABLE TO THOSE RESPONSIBLE FOR CLOSING THE DRUMS AFTER FILLING. THE USE OF NON-SPARKING TOOLS IS RECOMMENDED TO CLOSE DRUMS CONTAINING HAZARDOUS MATERIALS.

CLOSING INSTRUCTIONS FOR 1A2 FULL OPEN HEAD DRUMS WITH SOLID SEAL™ BOLT RING CLOSURE – TYPE II

(TYPE II HAS A 5/8” BOLT WITH A NYLON PATCH AND DOES NOT INCLUDE A RETAINING NUT OR JAM NUT)



-
1. COVERS MUST BE FIRMLY SEATED ON THE TOP OF THE DRUM WITH THE GASKET IN PLACE. CARE MUST BE TAKEN TO ENSURE THAT THE GASKET HAS NOT BECOME DISLODGED, LOOPED, OR TWISTED DURING EITHER REMOVAL OR PLACEMENT OF THE COVER.
 2. SNAP THE CLOSING RING OVER THE COVER AND CURL AREA OF THE DRUM, MAKING SURE THAT IT IS SEATED OVER THE ENTIRE PERIMETER. CHECK TO SEE THAT THE COVER AND DRUM CURL ARE FULLY CONTAINED AND CENTERED WITHIN THE RECESS OF THE RING.
 3. THE BOLTS FOR THIS APPLICATION HAVE A NYLON PATCH ON THE THREADS. INSERT THE 5/8” DIAMETER NYLON PATCHED BOLT THROUGH THE UNTHREADED RING LUG AND TIGHTEN THE BOLT WHILE SIMULTANEOUSLY TAPPING THE OUTSIDE OF THE CLOSING RING AROUND THE ENTIRE PERIMETER WITH A NON-SPARKING MALLET.
 - A. THE BOLT SHOULD BE TIGHTENED UNTIL A TORQUE OF AT LEAST 65 FT-LB IS ACHIEVED.
 - B. AFTER THE BOLT IS TIGHTENED TO SPECIFICATION, THE TWO LUGS SHOULD MEET AND TOUCH EACH OTHER WITH NO GAP. IF THE LUGS DO NOT MEET, GO BACK TO STEP 1 AND REPEAT STEPS 1 THROUGH 3.

4. PRIOR TO SHIPMENT OF FILLED DRUMS, TORQUE OF THE BOLT SHOULD BE VERIFIED AND RETIGHTENED TO THE VALUES STIPULATED ABOVE, IF NECESSARY.